



IDIS Mobile iOS

Operation Manual

Before reading this manual

IDIS Mobile for iOS is an app for connecting to a device (NVR or network camera) using an iOS mobile device (iPod Touch, iPhone or iPad running iOS 6.0 or later) and remotely monitoring videos via a network connection.




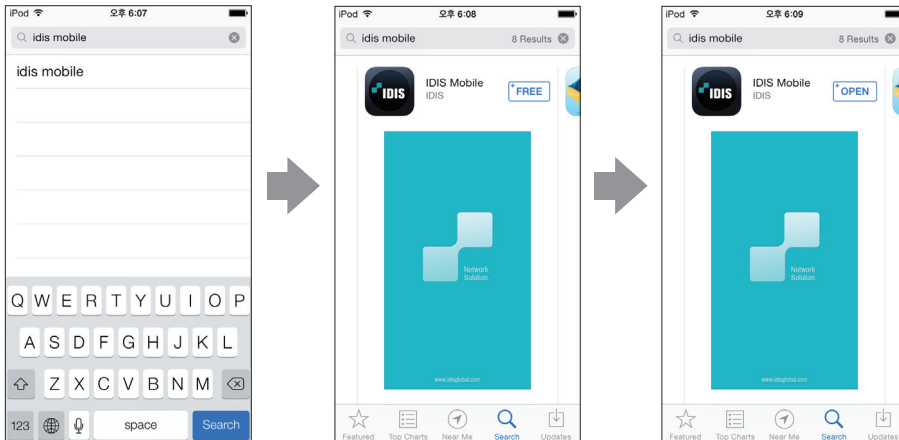
Connecting to certain devices may not be supported depending on device's specifications and version.


System Requirements

OS	iOS 6.0 or above
Network	Wi-Fi or mobile network (3G or 4G) provided by the iOS mobile device

App Installation

- 1 Open **App Store**  on your device.
- 2 In **App Store**, enter **IDIS Mobile** in the search field.
- 3 Install **IDIS Mobile** and open it.

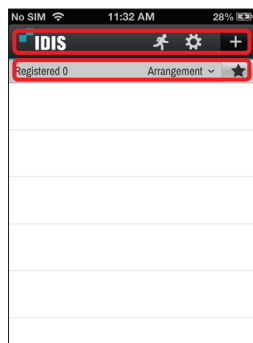


 To remove the **IDIS Mobile** program, press and hold the program icon for 2 seconds and then press the  button.

 This service requires heavy data traffic, and using a Wi-Fi connection is recommended. Using wireless internet (3G, LTE) may result in excessive data charges.

Running & Configuring App

Launch **IDIS Mobile**. The following start-up screen will appear.



Title Bar

- (Push Message): For reading push messages.
- (Settings): Change settings of IDIS Mobile or view information.
- (New Registration): Registers device. For more details, refer to Device Registration below.

Device List Options

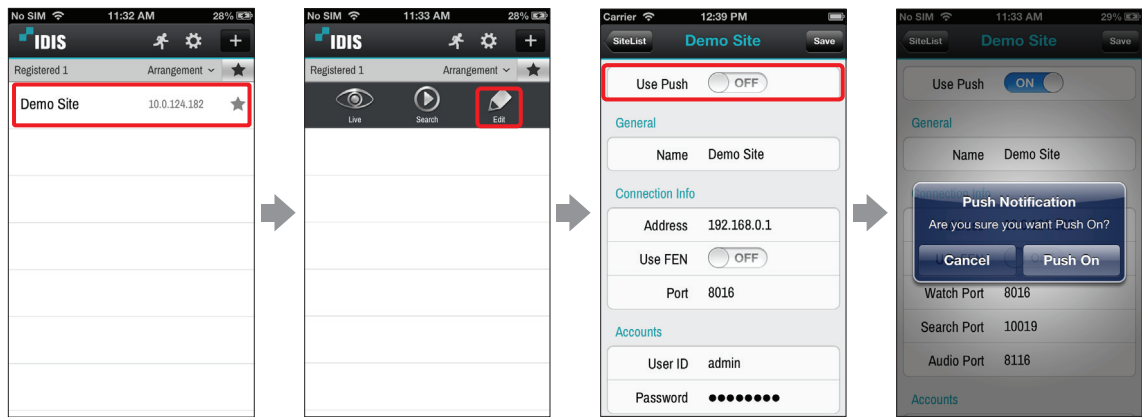
- **Registered:** Shows the number of registered devices.
- **Arrangement:** Sort the list in ascending or descending order.
- (Favorites): Shows devices registered as favorites on top.

Push Message

It's possible to receive device-event alerts on the mobile device as push messages. To enable push messages, configure **IDIS Mobile** as described below.

- ☒
- This feature is available only with devices that support push messaging and needs to be set up beforehand in order to function correctly. For more information, refer to the concerned device's operation manual.

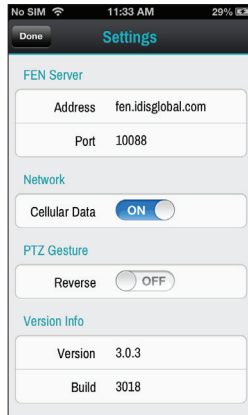
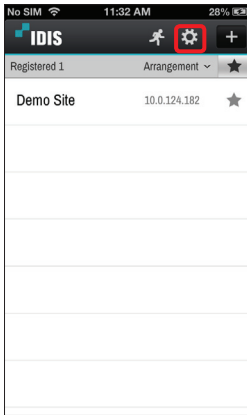
- 1
- Select a device on the device list. From the menu that appears, select **Edit** and then set the **Use Push** option to **ON** (On).



- 2
- When a device event occurs, **Push Message** button will be shown on the title bar at the top, along with . Tap on the button to read the push message.

Setup

Press **Settings** on the title bar at the top to check the settings of IDIS Mobile and make changes if necessary.



- **FEN Server:** If the device is using an additional FEN server, enter the FEN server information. (Default site: fen.idisglobal.com, Default port number: 10088)

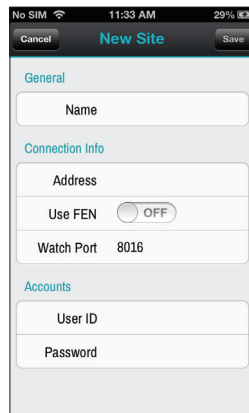
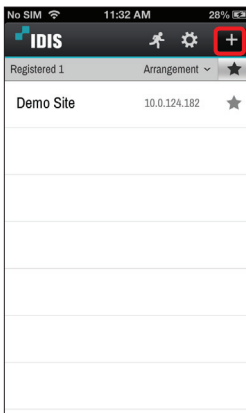



For more details, contact your FEN server administrator.

- **Network:** Enable/disable cellular data use.
- **PTZ Gesture:** If you select **Reverse**, the PTZ camera will pan in the opposite direction when you drag the screen in PTZ mode.
- **Backup:** Saves IDIS Mobile's settings as a file.

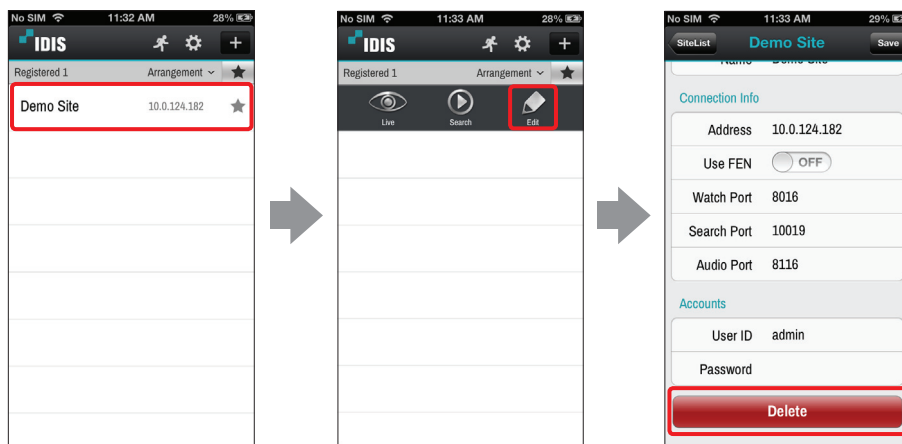
Device Registration

- 1 Press the **+** (New Registration) button on the title bar at the top. The following menu will appear.



- **General:** Enter a name of the device to be used in IDIS Mobile.
- **Connection Info:** Configure FEN, remote address, and remote port settings.
 - Deselect the checkbox if FEN (For Easy Network Service) is not enabled on the device. If using a separate FEN server, tap  (Settings) to configure FEN server settings (Default site: fen.idisglobal.com, Default port number: 10088). For more details, contact your FEN server administrator.
 - If FEN feature is not enabled on the device, deselect **Use FEN** checkbox and enter the device's IP address under **Address**. Default value is recommended for the **Port** setting.
- **Accounts:** Enter the User ID and Password used to login to the device.

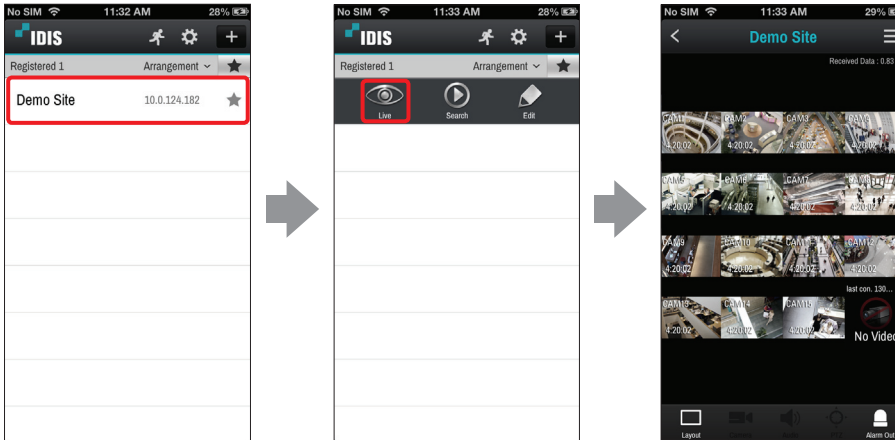
- 2 To modify information about registered devices, select the device from the device list. When the menu appears, select **Edit** and modify the device information.



- **Delete:** Deletes device.

Live

Select a device on the device list. When the menu appears on the screen, select **Live**. The live video from the selected device will be displayed on the screen.




- **Screen:** Tap the screen to view video from the current camera in 1x1 layout. See below for information on screen controls.

Go to previous or next camera group (if a video exists in the next camera group)	Drag the screen to left and right
Hide/show the camera's OSD (1x1 layout only).	Tap on camera screen.
Original Screen/Full Screen	Repeatedly tap on camera screen.
Disconnect and return to startup menu.	Tap (Back) on the title bar at the top.

- **Received Data:** Displays current connection's network usage.




Not support in portrait mode.

-  : Change screen layout. Press the button to view the list of available layouts. Select the desired layout from the list. In landscape mode, press and hold on the screen to bring up the layout list.

-  : Show list of camera channels. Press the desired channel to view videos from the selected camera.



Not support in portrait mode.

-  : In PTZ Mode, you can control PTZ cameras.




- Only supported in 1x1 layout.
- This function is not supported if a PTZ camera was not configured on the device. The PTZ icon is displayed on the camera screen if PTZ mode is supported.

-  : Supports two-way audio communication with the device.

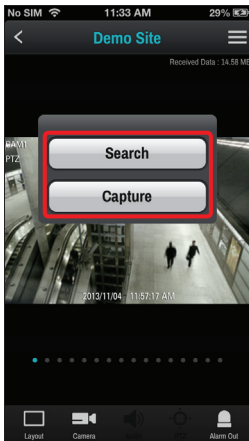


- Only supported in 1x1 layout.
- Layout or camera channel cannot be changed while in Two-way Audio mode. Changing the camera channel automatically disables two-way audio mode.

-  : Enable/disable alarm outs and beeps on devices that support alarm out.

 Some functions may not be supported depending on the device specifications or version. If a function is not supported, buttons for unsupported functions are either not shown or deactivated.


From Live screen, press the  (Menu) button on the title bar at the top. This makes it possible to use **Search** and **Capture** features.

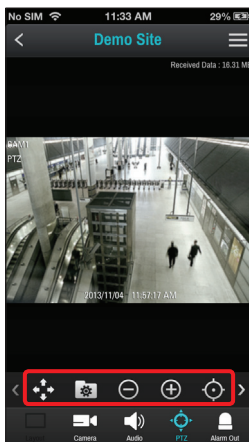
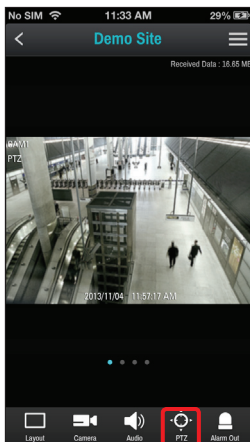










- **Search:** Switches over to the device's search screen.
- **Capture:** Captures the current frame. Captured frames are saved under **Camera Roll**.


 Capture is supported in 1x1 layout only.

PTZ Control

1 Tap . In PTZ Mode, you can control PTZ cameras.

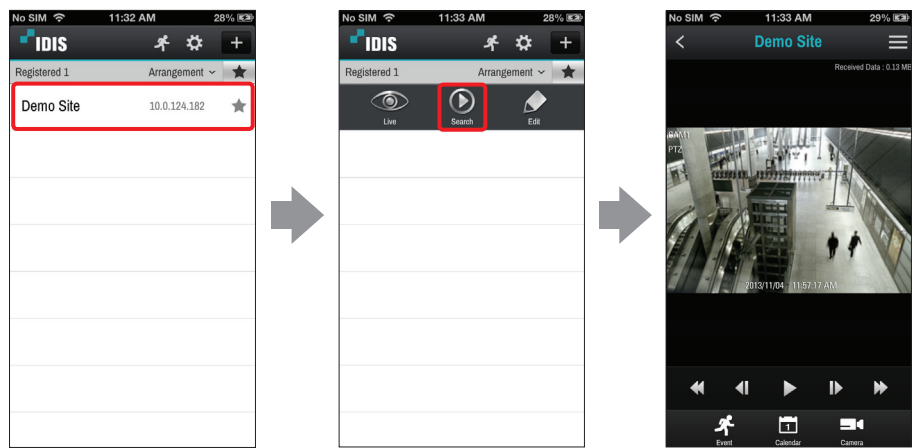


-  (Pan): Pans the PTZ camera.
-  (View Presets): Show list of device's presets. Press the preset to pan the PTZ camera to the preset position.
-  /  (Zoom In/Out): Zoom in or out on the video. Place two fingers on the screen and move them closer or farther apart to zoom in/out.
-  /  (Near/Far Focus): Change the camera's focus between near and far.
-  /  (Close/Open Aperture) Close or open aperture.

 Certain PTZ functions may not be supported in landscape mode.

Search & Playback

Select a device on the device list. When the menu appears on the screen, select **Search**. The video recording from the selected device will be displayed on the screen.



- Screen: Tap the screen to view video from the current camera in 1x1 layout. See below for information on screen controls.



Only 1x1 layout is supported.

Show/hide OSD on the subject camera	Tap on camera screen.
Disconnect and return to startup menu.	Tap (Back) on the title bar at the top.

- **Received Data:** Displays current connection's network usage.



Not support in portrait mode.


- (Play/Pause): Stop or play video recording shown in the current screen.
- (Go to Previous/Next Video): Go to previous or next video by frame or time.
- (High-speed Rewind/High-speed Playback): Plays video recording in high-speed in reverse or normally.
- (Go to Beginning/End): Go to the first/last video among the recording data of the selected date.

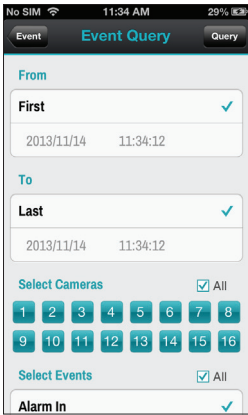


Go to Beginning/End is not supported in portrait mode.

- : Search events. If the device is a network camera, only the events that occurred while SD Memory Card Recording feature is enabled can be searched.
- : Search videos recorded on specific date and time.
- : Show list of camera channels. In landscape mode, press and hold on the screen to bring up the camera channel list. Press the desired channel to view video recordings from the selected camera.

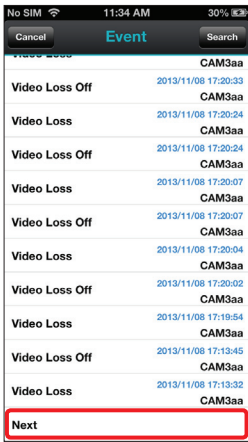
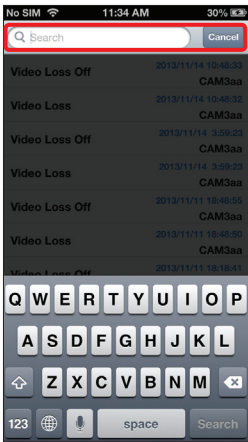
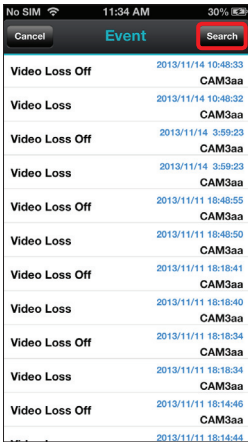
Event Query

You can search events by pressing  in Search & Play modes. If the device is a network camera, only the events that occurred while video is recorded on SD Memory Card can be searched.



Event Query: Specify event-search parameters.


- **From / To:** Define the search range by specifying the starting and ending times and dates. To search the entire recording data, check the **First** and **Last** options.
- **Select Cameras:** Designate the target camera. To designate all cameras, select the **All** option.
- **Select Event:** Specify the type of the target event. To designate all events, select the **All** option.

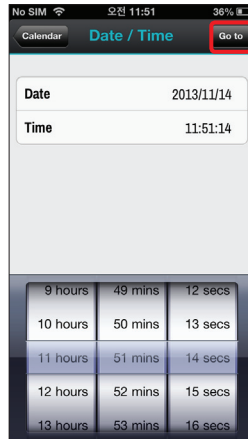


Event: Press **Search** button on the title bar at the top to display searched events on the list.

- **Search:** Enter the search query. Event-recording entries that match the query are shown.
- **Event List:** Select an event from the list to play the corresponding recording. Tap **Next** at the bottom to see the next set of results (up to 100).

Calendar Search

You can search videos recorded from specific date and time by pressing  button in Search & Play modes.



- 1 Dates that contain recording data are displaying dot at the bottom. Select a date from the calendar to see a time graph of the available recording at the bottom.
- 2 Select a time range and then specify the Minute/Second.
- 3 Press **Go to** button. The video recordings for the selected time will be displayed on the screen.



IDIS Co., Ltd.

For more information, please visit at
www.idisglobal.com